

Dell™ Wireless Mouse WM514

Owner's Manual



Information in this document is subject to change without notice.

© 2015 Dell Inc. All rights reserved.

Reproduction of these materials in any manner whatsoever without the written permission of Dell Inc. is strictly forbidden. Trademarks used in this text : Microsoft® and Windows® are either trademarks or registered trademarks of Microsoft Corporation in the United States and/or other countries; Dell™ and the DELL logo are trademarks of Dell Inc.

Other trademarks and trade names may be used in this document to refer to either the entities claiming the marks and names or their products. Dell Inc. disclaims any proprietary interest in trademarks and trade names other than its own.

2015 - 11 Rev. A01

Restrictions and Disclaimers

The information contained in this document, including all instructions, cautions, and regulatory approvals and certifications, is provided by the supplier and has not been independently verified or tested by Dell. Dell cannot be responsible for damage caused as a result of either following or failing to follow these instructions.

All statements or claims regarding the properties, capabilities, speeds or qualifications of the part referenced in this document are made by the supplier and not by Dell. Dell specifically disclaims knowledge of the accuracy, completeness or substantiation for any such statements. All questions or comments relating to such statements or claims should be directed to the supplier.

Export Regulations

Customer acknowledges that these Products, which may include technology and software, are subject to the customs and export control laws and regulations of the United States ("U.S.") and may also be subject to the customs and export laws and regulations of the country in which the Products are manufactured and/or received. Customer agrees to abide by those laws and regulations. Further, under U.S. law, the Products may not be sold, leased or otherwise transferred to restricted end-users or to restricted countries. In addition, the Products may not be sold, leased or otherwise transferred to, or utilized by an end-user engaged in activities related to weapons of mass destruction, including without limitation, activities related to the design, development, production or use of nuclear weapons, materials, or facilities, missiles or the support of missile projects, and chemical or biological weapons.

Contents

Setup

Mouse

Dell Universal Receiver Feature for Windows

Features

Troubleshooting

Specifications

Statutory information

Warranty

Certifications

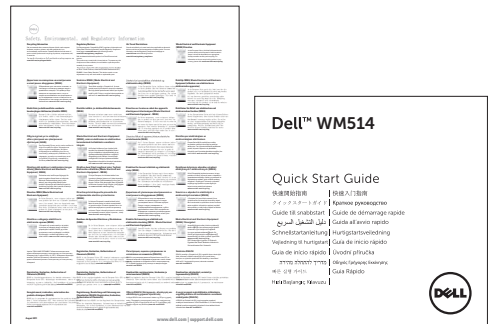
[Back to Contents Page](#)

Setup

System Requirements

- One USB port (for the USB receiver)
- Microsoft Windows 10 / 8.1 / 8 / 7

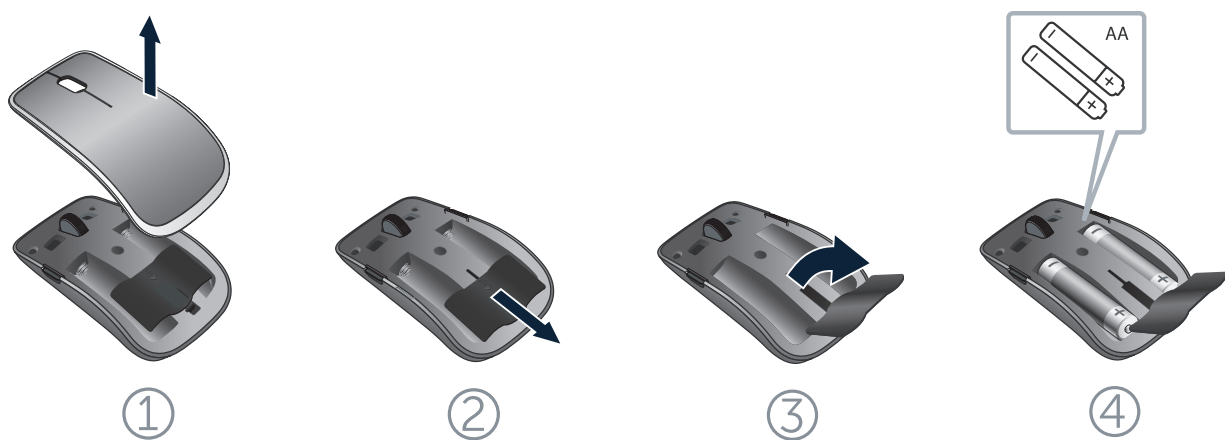
Contents of the Box



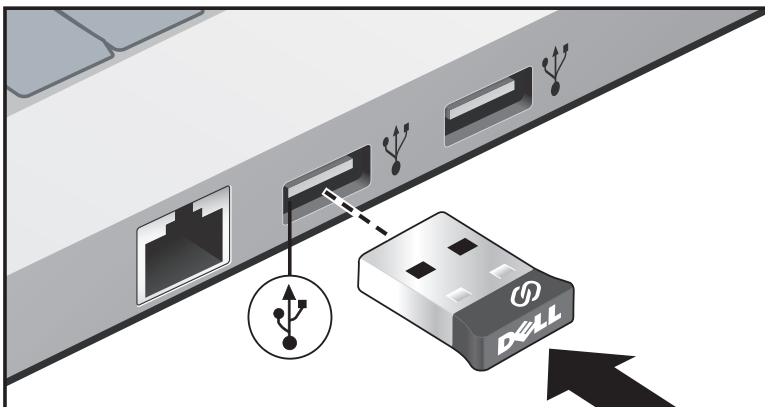
NOTE: The documents that shipped with the mouse may vary based on your region.

Setting up your Dell Wireless Mouse WM514

1. Install the two AA batteries in your mouse.



2. Connect the USB universal receiver to your computer.



If your mouse is not working, see the [Troubleshooting](#) section.

Dell Universal Receiver Feature for Windows



The Dell Universal Receiver allows up to six Dell Universal compatible wireless devices to be added to the receiver.

Dell Universal Receiver Control Panel

You can add Dell Universal compatible wireless devices to the receiver using Dell Universal Receiver Control Panel.

Installing Dell Universal Receiver Control Panel

To install Dell Universal Control Panel:

1. Turn on the computer.
2. Open the web browser and navigate to **www.dell.com/support**.
3. Type in the Search bar "dell universal receiver". Then click **Search**.



4. Download and install the Dell Universal Receiver software in your system.

[Back to Contents Page](#)

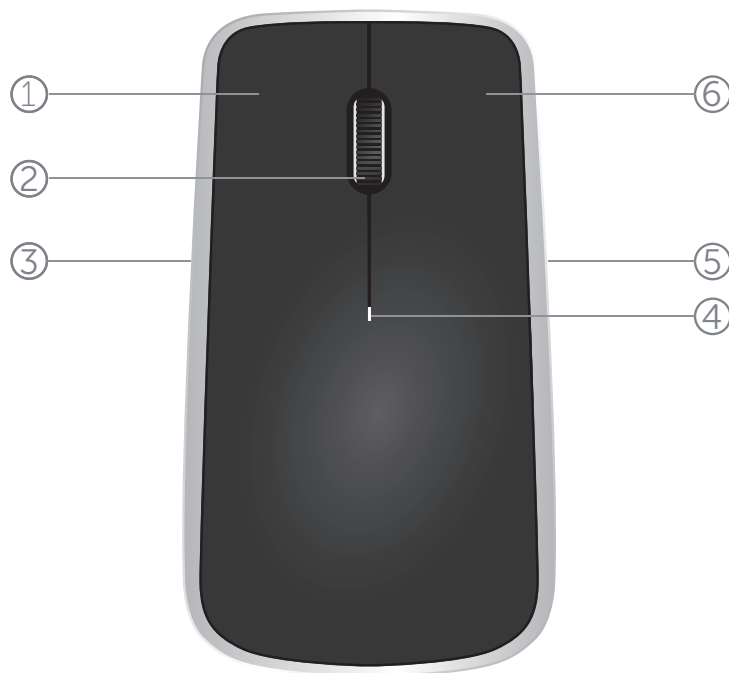
Using Dell Universal Receiver Control Panel

The receiver and mouse shipped with your system are paired at the factory. Use the Dell Universal Receiver Control Panel to view the connection status of your wireless mouse or pair the mouse with another receiver.

Follow the instructions on the screen to add a device or to remove pairing.

Features

Top View



1. Left mouse button

2. Tilt wheel

3. Side button*

4. Battery status light

Blinking amber - Battery charge is low. Replace the batteries.

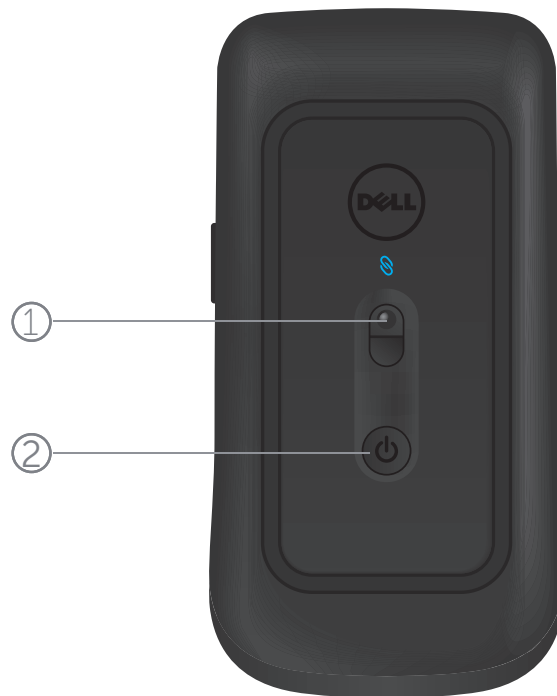
5. Side button*

6. Right mouse button

*Both side buttons perform the same function.

Features

Bottom View



1. Laser sensor
2. Power button

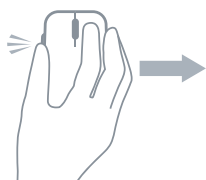
Shortcut Gestures



Scroll

Press and hold side button, and slide the mouse towards left.

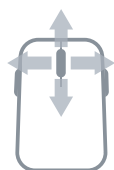
(Windows 8 and 8.1 only)



App switch

Press and hold side button, and slide the mouse towards right.

(Windows 8 and 8.1 only)



Scroll and pan

4-way scroll

(Windows 7, 8, 8.1, 10)



Zoom in/out

Press and hold side button, and scroll wheel up or down.

(Windows 7, 8, 8.1, 10)



Back

Press and hold side button, and tilt wheel towards left.

(Windows 7, 8, 8.1, 10)



Forward

Press and hold side button, and tilt wheel towards right.

(Windows 7, 8, 8.1, 10)

Increasing the Battery Life of your Mouse

The mouse has three operating modes built in to conserve battery power:

1. Sleep mode: When the mouse has been inactive for 5 seconds.
To wake the mouse: Move, click or scroll the tilt wheel.

2. Deep sleep mode: When the mouse has been inactive for 5 minutes.
To wake the mouse: Move or click.

3. Cut-off mode: When the mouse has been carried around or left facing upwards for 5 minutes or when the mouse has been inactive for 4 hours.
To wake the mouse: Push the power button.

Troubleshooting

If you have problems with your mouse:

- Check if the batteries are inserted in the correct orientation.
- Check if the mouse's power button light is on.
- Remove and reinstall the batteries. Check to see if the power button light turns on (solid white).
- Remove and reconnect the USB receiver on your computer.
- Insert the USB receiver into another USB port on your computer.
- Restart your computer.

Specifications

General

Model Number	WM514
Connection Type	2.4 GHz Wireless technology
Supported Operating Systems	Microsoft Windows 10 Microsoft Windows 8.1 Microsoft Windows 8 Microsoft Windows 7

Electrical

Operating voltage	0.95 V to 1.8 V
Battery required	Two AA Alkaline

Physical Characteristics

Height	33.6 ± 0.3 mm
Width	58.4 ± 0.3 mm
Length	109.9 ± 0.5 mm
Weight	67g, without batteries

Environmental

Operating temperature	0 °C to 40 °C
Storage temperature	-40 °C to 65 °C
Operating humidity	90% maximum Relative Humidity, non condensing
Storage humidity	95% maximum Relative Humidity, non condensing

2.4 GHz Wireless

Radio transmission
Range

Bi-directional communication (Transceiver)
Up to 10 meters

Warranty

Limited Warranty and Return Policies

Dell-branded products carry a 1-year limited hardware warranty.

If purchased together with Dell system, it will follow the system warranty.

For U.S. customers:

This purchase and your use of this product are subject to Dell's end user agreement, which you can find at www.dell.com/terms. This document contains a binding arbitration clause.

For European, Middle Eastern and African customers:

Dell-branded products that are sold and used are subject to applicable national consumer legal rights, the terms of any retailer sale agreement that you have entered into (which will apply between you and the retailer) and Dell's end user contract terms. Dell may also provide an additional hardware warranty – full details of the Dell end user contract and warranty terms can be found by going to www.dell.com, selecting your country from the list at the bottom of the "home" page and then clicking the "terms and conditions" link for the end user terms or the "support" link for the warranty terms.

For non-U.S. customers:

Dell-branded products that are sold and used are subject to applicable national consumer legal rights, the terms of any retailer sale agreement that you have entered into (which will apply between you and the retailer) and Dell's warranty terms.

Dell may also provide an additional hardware warranty – full details of Dell's warranty terms can be found by going to www.dell.com, selecting your country from the list at the bottom of the "home" page and then clicking the "terms and conditions" link or the "support" link for the warranty terms.

[Back to Contents Page](#)

Certifications

Microsoft WHQL Logo

The Dell WM514 Bluetooth Mouse has passed WHQL logo testing by Microsoft Windows Hardware Quality Labs.

WHQL Logo is a certification scheme operated by Microsoft Windows Hardware Quality Labs. In this case it ensures that hardware is compatible with Microsoft Operating Systems. The keyboard and mouse are qualified through the use of WHQL test kits and have been included in the [Microsoft Hardware Compatibility List](#).